

Welcome to the British Motor Museum



The Museum is open from 10am - 5pm every day.

Weekdays may be quieter.

To enter the Museum, we have a slow moving revolving door.

Parking



There is accessible parking close to the Museum entrance.



Getting around



To reserve a wheelchair
call us on 01926
895300.

Please borrow a push
along Mini car for
younger visitors.





People you will meet



Duty Manager



Museum Assistant



Volunteer

Here are some of our friendly staff that you might meet on your visit. Everyone will be wearing a name badge.



People you will meet



You might meet our costumed Museum Explainers who can talk to you about the exhibits.



Pay Desk



You can buy a ticket on the day or on our [website](#).

The Museum Assistants will process your ticket.

They can give you information about our facilities and family activities.

Sometimes you may need to queue here.



Welcome Gallery



The Pay Desk is in the Welcome Gallery.

There can be Tannoy announcements and music playing here and it can sometimes be busy.



Main Museum Hall



This is a bright open space. It is one flat level with some blue seating throughout.

It can be noisy with lots of different audio visuals at different heights.

Most of our cars can be seen from all angles with space around them.





'Jump In' Cars



We have lots of interactives including touch screens. Our hands-on 'Under the Skin' area has flashing lights and can be quite noisy.

Our cars have 'do not touch' signs on their windows but we do have a few which visitors can sit in including one in the Sports Car section with wheelchair access.





Under the Mezzanine



This space is enclosed, the carpet is dark and there are lower lighting levels. You will see two costumed mannequins and lots of glass display cabinets.



Automobilia



Our Automobilia store contains lots of car related artefacts.

It has darker carpets and high ceilings.

There are high glass display cabinets that create a narrower space.



Temporary Exhibition Space



This is the entrance to our temporary exhibition space. This space is updated regularly and is likely to change.



Mezzanine



There are glass sided stairs up to our Mezzanine.

The ceiling is lower and there are some glass barriers.

The lift fits a standard wheelchair. Entry is from the front and exit is to the side. It has Braille and tactile markings close to the buttons.



Rotunda on Museum Level



Entry is through some heavy glass fire doors. There is one set of automated doors with a push pad.

The area is well lit and the floor is light. There are no audio visuals in this area.





Learning Hub

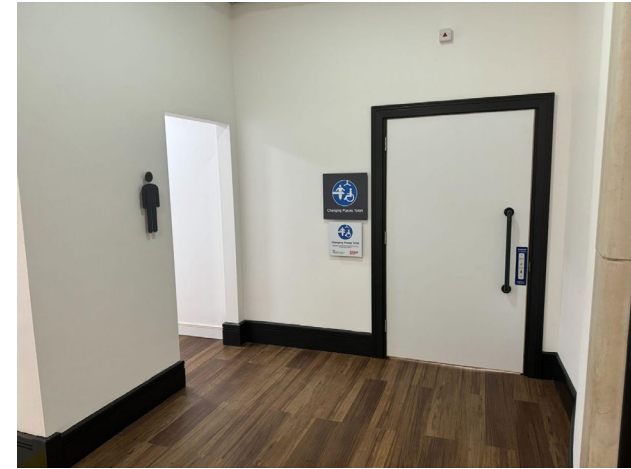


The Learning Hub is used by visiting schools, families and community groups. Entry is via a small ramp and some double doors. There is light-coloured flooring and dimmable lighting. Contrasting skirting and architraves supports those with visual impairment. There are no audiovisuals in this space. The Learning Hub may vary in furniture layout.





Museum Level Toilets

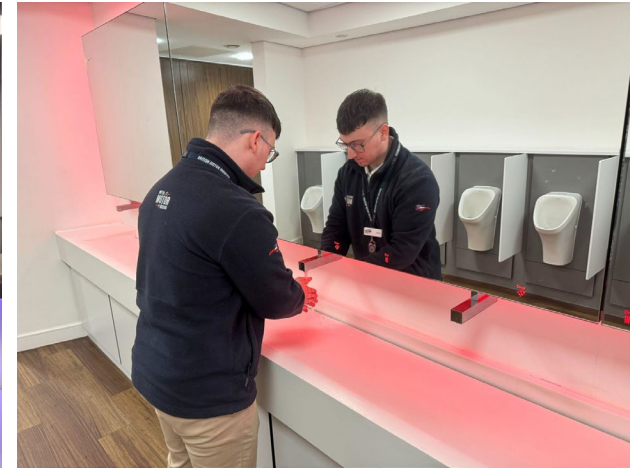


You can access these toilets, a Changing Places toilet and baby changing facilities from the Rotunda through some glass doors behind the lift. These doors are usually open. The toilets have large pictorial signs outside them. To access the Changing Places toilet, a radar key can be obtained from the Pay Desk.





Café Level Toilets



These have mood lighting, dark wood flooring and doors - one of which has a handle.

To use the soap, water and hand driers, put your hands underneath the mirrors.

There are also two accessible toilets with baby changing facilities.





Getting around



Our automated escalators take you up to our café, toilets and baby changing facilities. The escalators can be noisy.

The lift fits a large motorised wheelchair. It has tactile buttons, Braille and audio assistance.



Café



Our café is table service and can sometimes be noisy. Where there is alternative seating, there is dark carpet and light walls.

A staff member can get you a highchair or a chair with armrests.

We cater for a range of dietary requirements and have Coeliac UK Gluten Free accreditation.



Gift Shop



The Gift Shop has open glass doors and barriers around it.

The floor space is narrow and products are at different levels - some are high up.

There is a lowered counter and a hearing loop.



Collections Centre



Follow the signs along a slightly sloping tarmacked path to the Collections Centre.

Entry is through automatic doors which in winter have heaters above them.

This space is bright with light walls and smooth floors. A member of staff at the desk will explain the layout.

The last entry to this building is 4.30pm.



Collections Centre Level One



The corridor to the Jaguar Daimler Heritage Trust collection is narrow and has low lighting but is signposted.



Here we have four unisex toilets, baby changing facilities and an accessible toilet.

There are some videos playing in the exhibition hall beyond.



Collection Centre Level Two



Upstairs is the Museum's Reserve Collection. As this is a storage space, the cars are parked close together so many cannot be seen on every side.



There are glass barriers which look out over our Restoration Workshop. There are no videos or music, but sometimes the workshop can be noisy with strong smells.

The lighting can change as there are lots of large windows.



Collection Centre Getting Around



To get upstairs there is a spacious lift with tactile and Braille buttons and audio assistance. A member of staff will be happy to direct you to this. We also have stairs with bannisters on both sides.



Fire Exits



If you hear a loud sound and see red flashing lights please head to the closest fire exit. This will have a green sign above it. Evac chairs are available - our Museum Assistants are trained in their use. Everyone needs to meet at the **Fire Point C** by the Collections Centre.

